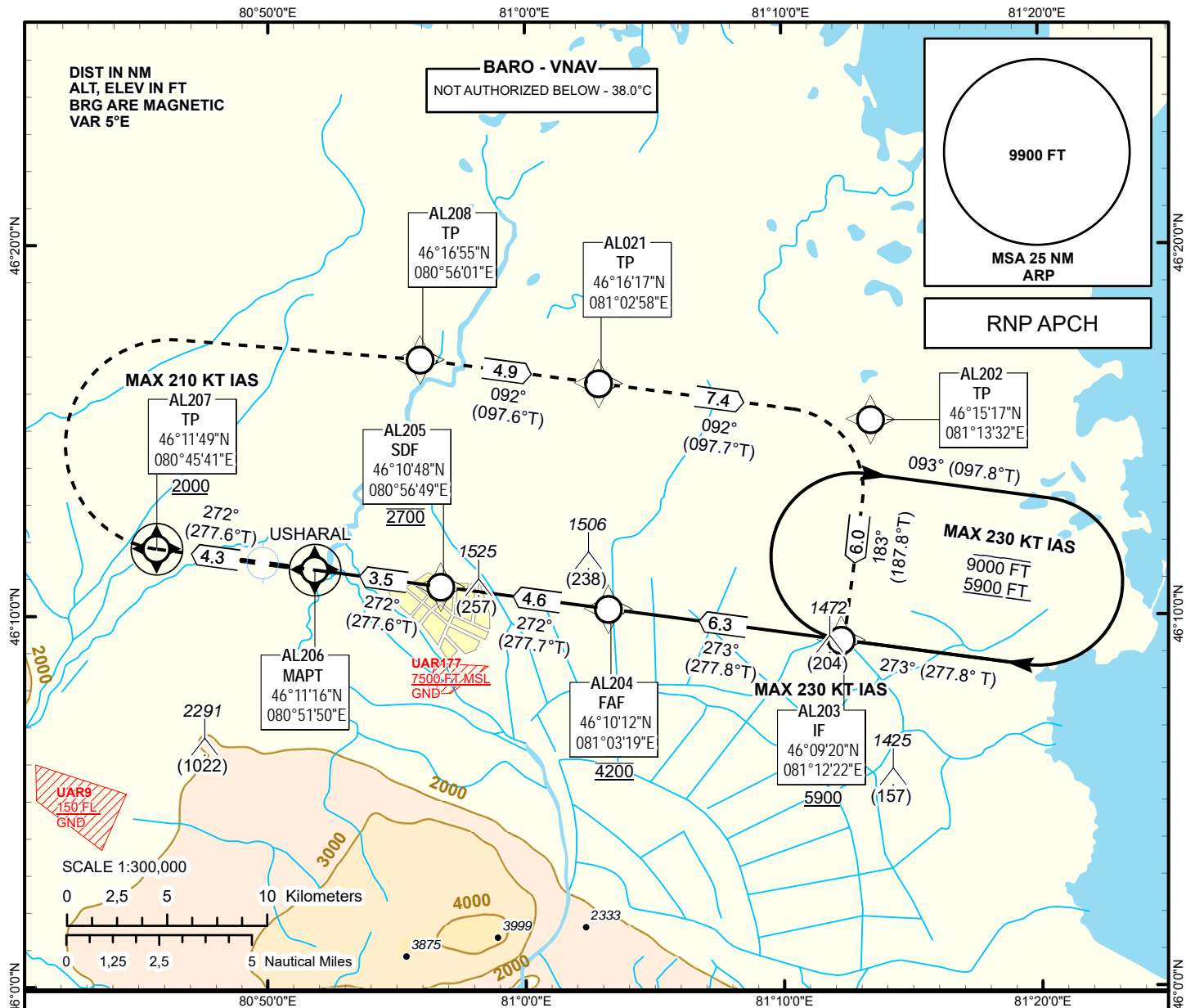


INSTRUMENT
APPROACH
CHART - ICAO

AERODROME ELEV **1295 FT**
HEIGHTS RELATED TO
THR RWY 27 - ELEV **1268 FT**

USHARAL TOWER 118.1

USHARAL
RNP RWY 27

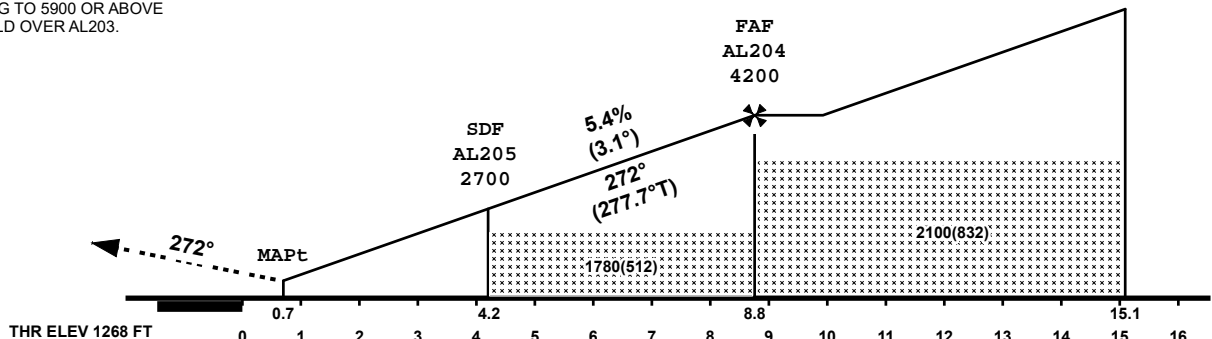


MISSED APPROACH:

CLIMB TO AL207, RIGHT TURN DIRECT TO AL208,
TRACK TO AL021, TRACK TO AL202,
CONTINUE TRACK TO AL203,
CLIMBING TO 5900 OR ABOVE
AND HOLD OVER AL203.

TRANSITION ALT 10000 FT

IF
AL203
5900



OCA (OCH)		A	B	C	D
Straight	LNAV	1570 (302)			
	LNAV/VNAV	1470 (202)	1480(212)	1500 (232)	1510 (242)

CHANGE: New chart.

TABULAR DESCRIPTION

IAP RWY 27									
Serial Number	Path Desc.	Waypoint Identifier	Fly - over	Course °M(°T)	Dist (nm)	Turn Dir	Altitude FT	Speed KT	VPA (°)
010	IF	AL203	-	-	-	-	+5900	-230	-
020	TF	AL204	-	273(277.8)	6.3	-	@4200	-	-
030	TF	AL205	-	272(277.7)	4.6	-	@2700	-	-3.1
040	TF	AL206	+	272(277.6)	3.5	-	@1549	-	-3.1
050	CF	AL207	+	272(277.6)	4.3	-	+2000	-210	+1.4
060	DF	AL208	-	-	-	R	-	-	+1.4
070	TF	AL021	-	092(097.6)	4.9	-	-	-	+1.4
080	TF	AL202	-	092(097.7)	7.4	-	-	-	+1.4
090	TF	AL203	-	183(187.8)	6.0	R	+5900	-	+1.4
100	HM	AL203	-	273(277.8)	5.0	R	+5900	-	-

WAYPOINT LIST

IAP RWY 27		
Waypoint identifier		Coordinates
AL203		460920.29N 0811221.57E
AL204		461011.56N 0810319.19E
AL205		461047.98N 0805649.13E
AL206		461115.69N 0805149.58E
AL207		461149.44N 0804541.38E
AL208		461655.48N 0805601.48E
AL021		461616.71N 0810257.9E
AL202		461516.8N 0811332.01E